

cbsupports.org
info@cbsupports.org

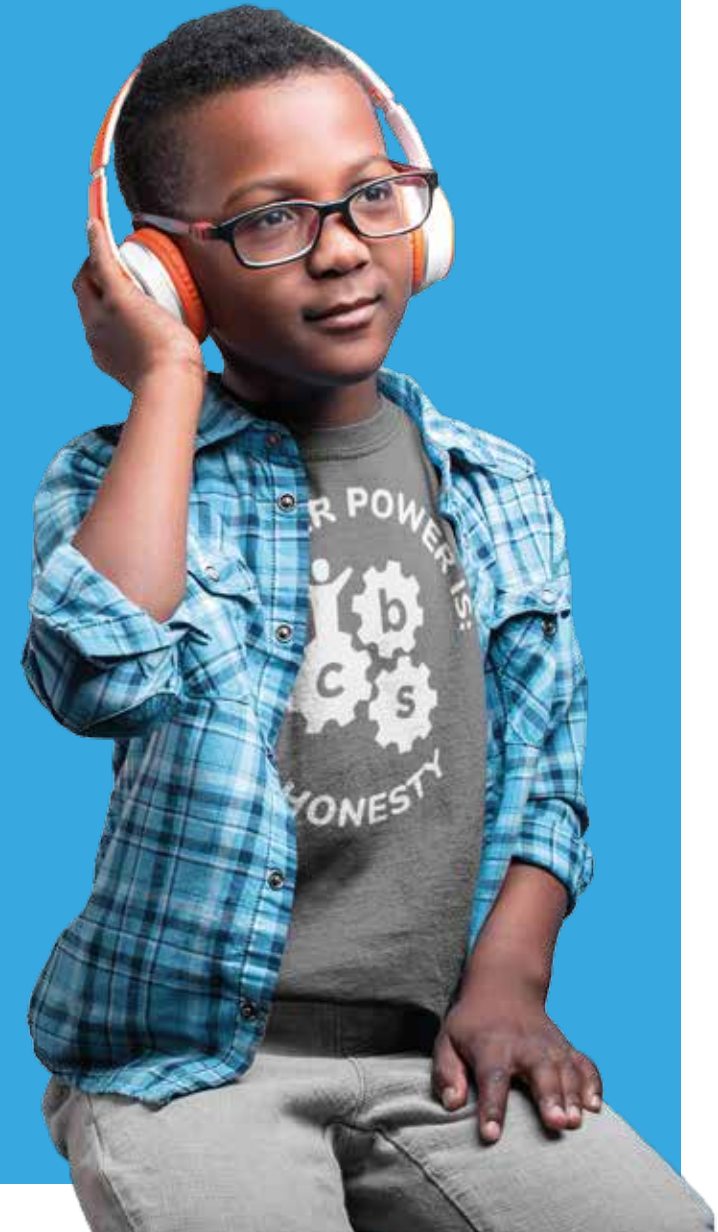
NEW YORK OFFICE
P 718.633.4411 | F 718.633.4420

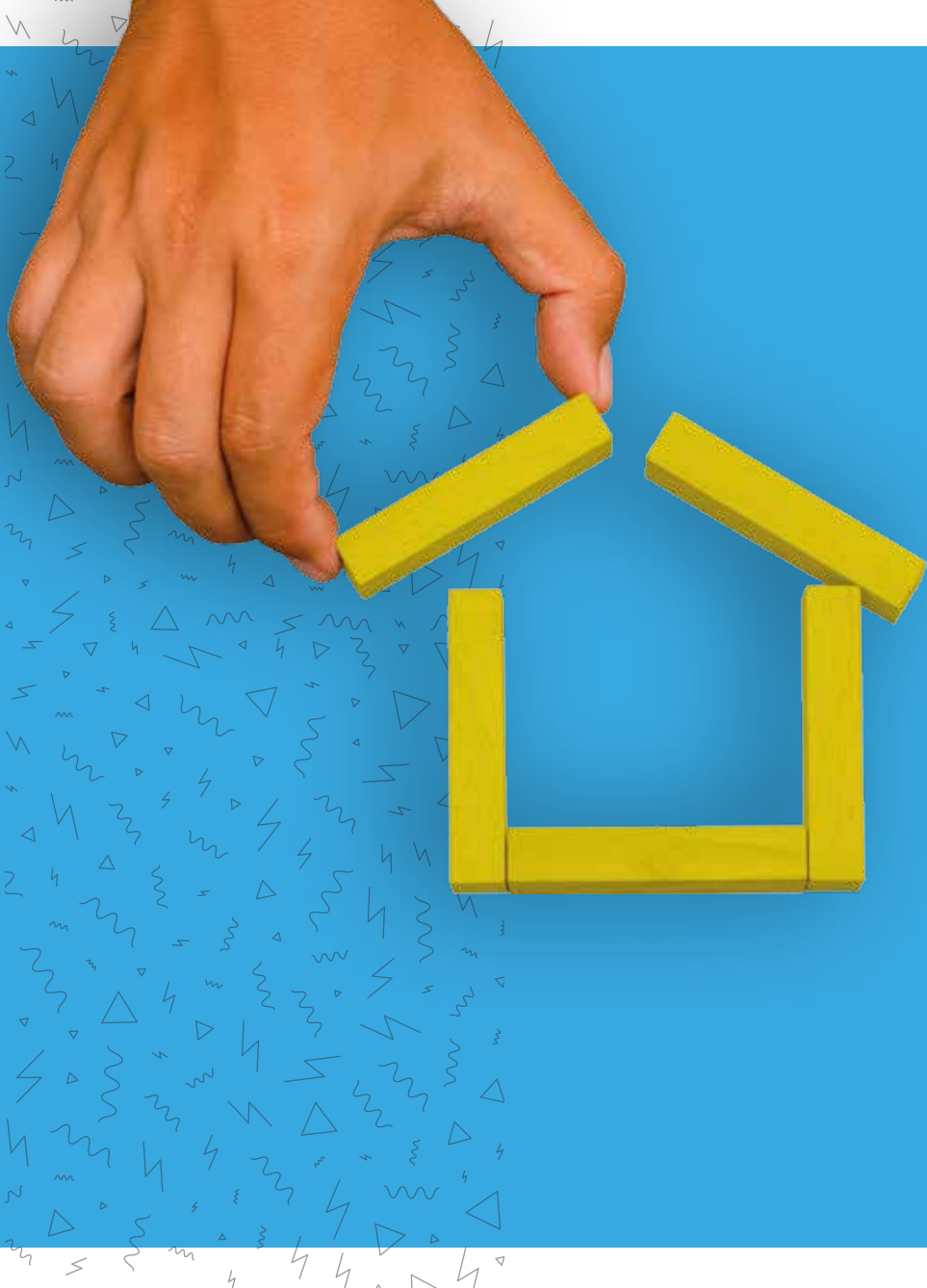
NEW JERSEY OFFICE
P 201.283.9600 | F 201.283.9644



Autism Support Services

providing superior
ABA THERAPY





WHO

Welcome to Comprehensive Behavior Supports

As your licensed provider of in-home ABA therapy, Comprehensive Behavior Supports introduces the most ASD (Autism Spectrum Disorder) and related disabilities. The patients we serve enjoy the care of Board Certified Behavior Analysts (BCBA) and highly skilled paraprofessionals in their own home setting. Because we all play for the same team, there's no bureaucracy or red tape. And that's the Comprehensive Behavior Supports difference.

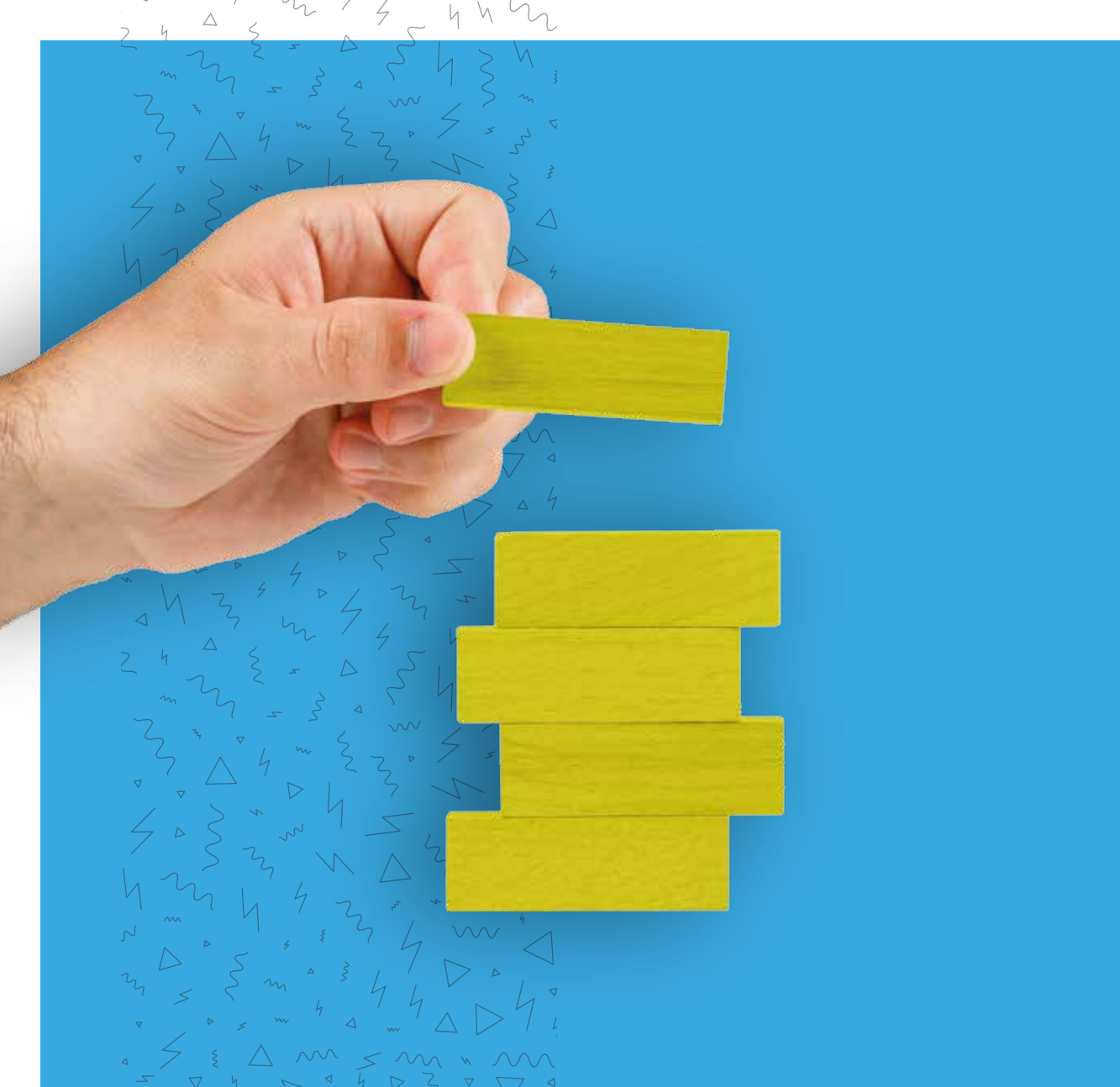
WHAT

ABA (Applied Behavior Analysis) & Related Services

ABA therapy opens a world of possibilities to individuals with autism and developmental disabilities. The the child's natural environment.

Services include:

- Behavioral Assessment
- Treatment Planning
- ABA Therapy
- Family Training
- Coordination Of Care
- Social Skills Groups



WHERE

Serving Patients Across New York and New Jersey

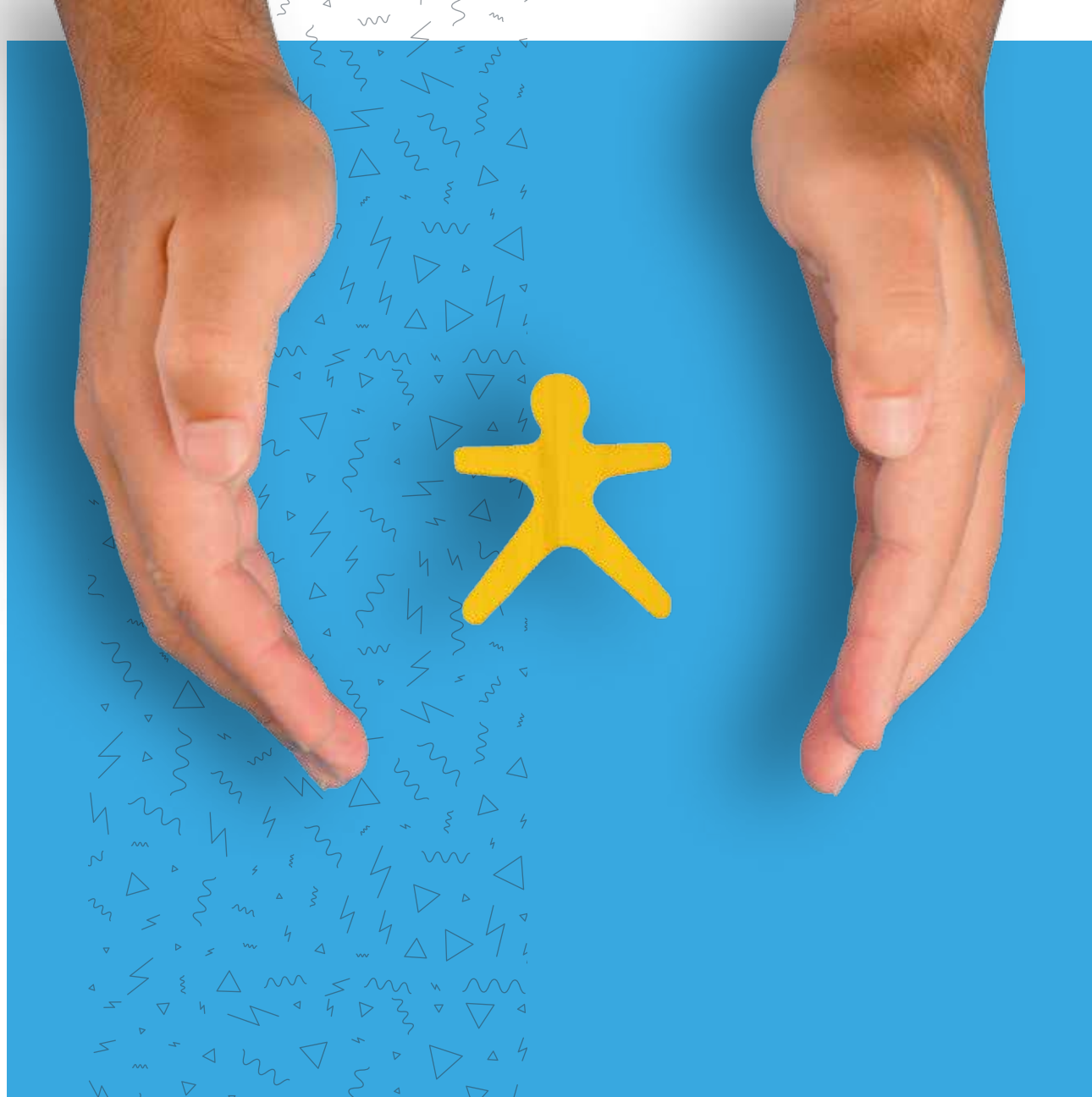
As part of our commitment to ease the family burden, we have professionals available who speak your language: English, Spanish, Russian, Chinese, Hebrew, Yiddish.

WHAT YOU NEED

Group, Private or Child Health + Insurance

ELIGIBLE FAMILIES ENJOY
LOW-COST SERVICES

Comprehensive Behavior Supports is approved by most major insurance carriers as a leading service provider for individuals with autism and developmental disabilities. Eligible families enjoy up to 100% coverage resulting in low out-of-pocket costs.



WHY US?

Care

We care about the wellbeing of children growing up with challenges and hand-select compassionate, professional BCBA's and paraprofessionals to help provide exceptional support.

Compassion

We're sensitive to the dynamics of individual families and understand how therapy is a child's personal journey we all take together – step by step.

Collaboration

Our entire model is built on teaming with parents, teachers and other professionals.